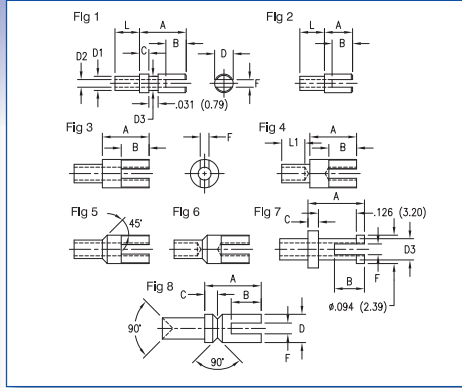


SOLDER TERMINALS - SLOTTED



Dimensions in inches (mm)
See page 92/93 for recommended
Anvil and Punch

How to order code

1XX - XXXX - XX - XX - 00

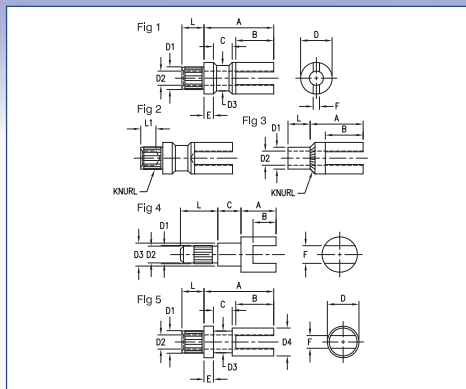
Basic Part No. | Finish

Material Code Table		
Component	Material	RoHS
Terminal	Brass	✓
	Leaded Red Brass*	✓

Finish Code Table		
Dash No.	Finish	RoHS
-01	Silver	✓
-04	Electro-Tin	✓
-05	Electro-Solder	X

Fig.	Basic Part No.	L	Board Thickness	L1	A	B	C	D	D1	D2	D3	F	Mtg. Hole Diameter
1	140-2089 -11	.035 (0.89)	.016 (0.40)	-	.156 (3.96)	.068 (1.73)	.031 (0.79)	.062 (1.57)	.047 (1.19)	.026 (0.66)	.047 (1.19)	.025 (0.64)	.052 (1.32)
	-01	.051 (1.30)	.031 (0.79)	-	.156 (3.96)	.068 (1.73)	.031 (0.79)	.062 (1.57)	.047 (1.19)	.026 (0.66)	.047 (1.19)	.025 (0.64)	.052 (1.32)
	-02	.082 (2.08)	.062 (1.57)	-	.156 (3.96)	.068 (1.73)	.031 (0.79)	.062 (1.57)	.047 (1.19)	.026 (0.66)	.047 (1.19)	.025 (0.64)	.052 (1.32)
	-03	.113 (2.87)	.094 (2.39)	-	.156 (3.96)	.068 (1.73)	.031 (0.79)	.062 (1.57)	.047 (1.19)	.026 (0.66)	.047 (1.19)	.025 (0.64)	.052 (1.32)
	-04	.145 (3.68)	.125 (3.18)	-	.156 (3.96)	.068 (1.73)	.031 (0.79)	.062 (1.57)	.047 (1.19)	.026 (0.66)	.047 (1.19)	.025 (0.64)	.052 (1.32)
	140-1019 -11	.035 (0.89)	.016 (0.40)	-	.156 (3.96)	.068 (1.73)	.031 (0.79)	.072 (1.83)	.047 (1.19)	.026 (0.66)	.057 (1.45)	.028 (0.71)	.052 (1.32)
	-01	.051 (1.30)	.031 (0.79)	-	.156 (3.96)	.068 (1.73)	.031 (0.79)	.072 (1.83)	.047 (1.19)	.026 (0.66)	.057 (1.45)	.028 (0.71)	.052 (1.32)
	-02	.082 (2.08)	.062 (1.57)	-	.156 (3.96)	.068 (1.73)	.031 (0.79)	.072 (1.83)	.047 (1.19)	.026 (0.66)	.057 (1.45)	.028 (0.71)	.052 (1.32)
2	140-1018 -11	.035 (0.89)	.016 (0.40)	-	.094 (2.39)	.068 (1.73)	-	.072 (1.83)	.047 (1.19)	.026 (0.66)	-	.028 (0.71)	.052 (1.32)
	-01	.051 (1.30)	.031 (0.79)	-	.094 (2.39)	.068 (1.73)	-	.072 (1.83)	.047 (1.19)	.026 (0.66)	-	.028 (0.71)	.052 (1.32)
	-02	.082 (2.08)	.062 (1.57)	-	.094 (2.39)	.068 (1.73)	-	.072 (1.83)	.047 (1.19)	.026 (0.66)	-	.028 (0.71)	.052 (1.32)
	-03	.113 (2.87)	.094 (2.39)	-	.094 (2.39)	.068 (1.73)	-	.072 (1.83)	.047 (1.19)	.026 (0.66)	-	.028 (0.71)	.052 (1.32)
	-04	.145 (3.68)	.125 (3.18)	-	.094 (2.39)	.068 (1.73)	-	.072 (1.83)	.047 (1.19)	.026 (0.66)	-	.028 (0.71)	.052 (1.32)
	140-1785 -11	.025 (0.64)	.016 (0.40)	-	.156 (3.96)	.093 (2.36)	-	.094 (2.39)	.062 (1.57)	.043 (1.09)	-	.026 (0.66)	.067 (1.70)
	-01	.045 (1.14)	.031 (0.79)	-	.156 (3.96)	.093 (2.36)	-	.094 (2.39)	.062 (1.57)	.043 (1.09)	-	.026 (0.66)	.067 (1.70)
	-02	.094 (2.39)	.062 (1.57)	-	.156 (3.96)	.093 (2.36)	-	.094 (2.39)	.062 (1.57)	.043 (1.09)	-	.026 (0.66)	.067 (1.70)
3	140-1941 -11	.025 (0.64)	.016 (0.40)	-	.156 (3.96)	.094 (2.39)	-	.094 (2.39)	.071 (1.80)	.046 (1.17)	-	.029 (0.74)	.076 (1.93)
	-01	.045 (1.14)	.031 (0.79)	-	.156 (3.96)	.094 (2.39)	-	.094 (2.39)	.071 (1.80)	.046 (1.17)	-	.029 (0.74)	.076 (1.93)
	-02	.094 (2.39)	.062 (1.57)	-	.156 (3.96)	.094 (2.39)	-	.094 (2.39)	.071 (1.80)	.046 (1.17)	-	.029 (0.74)	.076 (1.93)
	-03	.125 (3.18)	.094 (2.39)	-	.156 (3.96)	.094 (2.39)	-	.094 (2.39)	.071 (1.80)	.046 (1.17)	-	.029 (0.74)	.076 (1.93)
	-04	.156 (3.96)	.125 (3.18)	-	.156 (3.96)	.094 (2.39)	-	.094 (2.39)	.071 (1.80)	.046 (1.17)	-	.029 (0.74)	.076 (1.93)
	140-1385 -11	.025 (0.64)	.016 (0.40)	.040 (1.02)	.156 (3.96)	.093 (2.36)	-	.094 (2.39)	.062 (1.57)	.043 (1.09)	-	.025 (0.64)	.067 (1.70)
	-01	.045 (1.14)	.031 (0.79)	.062 (1.57)	.156 (3.96)	.093 (2.36)	-	.094 (2.39)	.062 (1.57)	.043 (1.09)	-	.025 (0.64)	.067 (1.70)
	-02	.094 (2.39)	.062 (1.57)	.062 (1.57)	.156 (3.96)	.093 (2.36)	-	.094 (2.39)	.062 (1.57)	.043 (1.09)	-	.025 (0.64)	.067 (1.70)
4	180-2752 -01	.062 (1.57)	.031 (0.79)	-	.188 (4.78)	.093 (2.36)	-	.125 (3.18)	.060 (1.52)	.042 (1.07)	-	.029 (0.74)	.064 (1.63)
	-02	.094 (2.39)	.062 (1.57)	-	.188 (4.78)	.093 (2.36)	-	.125 (3.18)	.060 (1.52)	.042 (1.07)	-	.029 (0.74)	.064 (1.63)
	-03	.125 (3.18)	.094 (2.39)	-	.188 (4.78)	.093 (2.36)	-	.125 (3.18)	.060 (1.52)	.042 (1.07)	-	.029 (0.74)	.064 (1.63)
	-04	.156 (3.96)	.125 (3.18)	-	.188 (4.78)	.093 (2.36)	-	.125 (3.18)	.060 (1.52)	.042 (1.07)	-	.029 (0.74)	.064 (1.63)
	180-7338 -01*	.062 (1.57)	.031 (0.79)	-	.173 (4.39)	.093 (2.36)	-	.094 (2.39)	.060 (1.52)	.042 (1.07)	-	.029 (0.74)	.064 (1.63)
	-02*	.094 (2.39)	.062 (1.57)	-	.173 (4.39)	.093 (2.36)	-	.094 (2.39)	.060 (1.52)	.042 (1.07)	-	.029 (0.74)	.064 (1.63)
	-03*	.125 (3.18)	.094 (2.39)	-	.173 (4.39)	.093 (2.36)	-	.094 (2.39)	.060 (1.52)	.042 (1.07)	-	.029 (0.74)	.064 (1.63)
	-04*	.156 (3.96)	.125 (3.18)	-	.173 (4.39)	.093 (2.36)	-	.094 (2.39)	.060 (1.52)	.042 (1.07)	-	.029 (0.74)	.064 (1.63)
5	180-2926 -01	.062 (1.57)	.031 (0.79)	.062 (1.57)	.188 (4.78)	.093 (2.36)	-	.125 (3.18)	.060 (1.52)	.042 (1.07)	-	.026 (0.66)	.064 (1.63)
	-02	.094 (2.39)	.062 (1.57)	.062 (1.57)	.188 (4.78)	.093 (2.36)	-	.125 (3.18)	.060 (1.52)	.042 (1.07)	-	.026 (0.66)	.064 (1.63)
	-03	.125 (3.18)	.094 (2.39)	.062 (1.57)	.188 (4.78)	.093 (2.36)	-	.125 (3.18)	.060 (1.52)	.042 (1.07)	-	.026 (0.66)	.064 (1.63)
	-04	.156 (3.96)	.125 (3.18)	.062 (1.57)	.188 (4.78)	.093 (2.36)	-	.125 (3.18)	.060 (1.52)	.042 (1.07)	-	.026 (0.66)	.064 (1.63)
6	140-1028 -01	.063 (1.60)	.031 (0.79)	-	.188 (4.78)	.100 (2.54)	.035 (0.89)	.125 (3.18)	.071 (1.80)	.040 (1.02)	.071 (1.80)	.036 (0.91)	.076 (1.93)
	-02	.094 (2.39)	.062 (1.57)	-	.188 (4.78)	.100 (2.54)	.035 (0.89)	.125 (3.18)	.071 (1.80)	.040 (1.02)	.071 (1.80)	.036 (0.91)	.076 (1.93)
	-03	.125 (3.18)	.094 (2.39)	-	.188 (4.78)	.100 (2.54)	.035 (0.89)	.125 (3.18)	.071 (1.80)	.040 (1.02)	.071 (1.80)	.036 (0.91)	.076 (1.93)
	-04	.156 (3.96)	.125 (3.18)	-	.188 (4.78)	.100 (2.54)	.035 (0.89)	.125 (3.18)	.071 (1.80)	.040 (1.02)	.071 (1.80)	.036 (0.91)	.076 (1.93)
7	140-2187 -11	.030 (0.76)	.016 (0.40)	-	.080 (2.03)	.032 (0.81)	.021 (0.53)	.045 (1.14)	.032 (0.81)	-	-	.015 (0.38)	.036 (0.91)
	-01	.045 (1.14)	.031 (0.79)	-	.080 (2.03)	.032 (0.81)	.021 (0.53)	.045 (1.14)	.032 (0.81)	-	-	.015 (0.38)	.036 (0.91)
	-02	.077 (1.96)	.062 (1.57)	-	.080 (2.03)	.032 (0.81)	.021 (0.53)	.045 (1.14)	.032 (0.81)	-	-	.015 (0.38)	.036 (0.91)
	-03	.108 (2.74)	.094 (2.39)	-	.080 (2.03)	.032 (0.81)	.021 (0.53)	.045 (1.14)	.032 (0.81)	-	-	.015 (0.38)	.036 (0.91)
-04	.139 (3.53)	.125 (3.18)	-	.080 (2.03)	.032 (0.81)	.021 (0.53)	.045 (1.14)	.032 (0.81)	-	-	.015 (0.38)	.036 (0.91)	

SOLDER TERMINALS - SLOTTED



Dimensions in inches (mm)
See page 92 for recommended Anvil and Punch

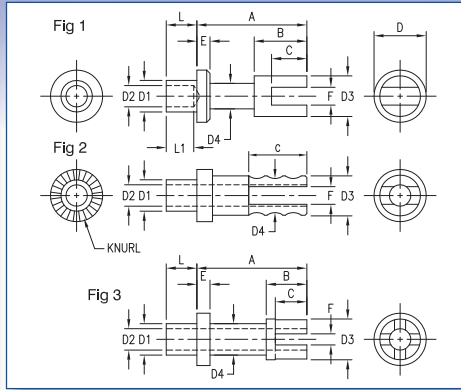
How to order code
1XX - XXXX - XX - XX - 00
 Basic Part No. | Finish

Material Code Table		
Component	Material	RoHS
Terminal	Brass	✓

Finish Code Table		
Dash No.	Terminal Finish	RoHS
-01	Silver	✓
-03	Gold	✓
-05	Electro-Solder	X

Fig.	Basic Part No.	L	Board Thickness	A	B	C	D	D1	D2	D3	E	F	L1	Mtg. Hole Diameter
1	140-1782 -03	.141 (3.58)	.094 (2.39)	.688 (17.48)	.250 (6.35)	.187 (4.75)	.250 (6.35)	.185 (4.70)	.120 (3.05)	.218 (5.54)	.187 (4.75)	.090 (2.29)	-	.189 (4.80)
	-04	.172 (4.37)	.125 (3.18)											
	140-1783 -02	.109 (2.77)	.062 (1.57)	.500 (12.70)	.219 (5.56)	.125 (3.18)	.219 (5.56)	.135 (3.43)	.102 (2.59)	.172 (4.37)	.093 (2.36)	.062 (1.57)	-	.141 (3.57)
	-03	.141 (3.58)	.094 (2.39)											
	-04	.172 (4.37)	.125 (3.18)											
	140-1784 -02	.109 (2.77)	.062 (1.57)	.344 (8.74)	.187 (4.75)	.062 (1.57)	.156 (3.96)	.112 (2.84)	.070 (1.78)	.125 (3.18)	.062 (1.57)	.031 (0.79)	-	.116 (2.95)
-03	.141 (3.58)	.094 (2.39)												
-04	.172 (4.37)	.125 (3.18)												
2	140-1937 -02	.109 (2.77)	.062 (1.57)	.344 (8.74)	.188 (4.78)	.063 (1.60)	.156 (3.96)	.112 (2.84)	.070 (1.78)	.125 (3.18)	.062 (1.57)	.072 (1.83)	.093 (2.36)	.116 (2.95)
	-03	.141 (3.58)	.094 (2.39)											
	-04	.172 (4.37)	.125 (3.18)											
3	140-1969 -01	.078 (1.98)	.031 (0.79)	.328 (8.33)	.207 (5.26)	-	.188 (4.78)	.112 (2.84)	.079 (2.01)	-	-	.053 (1.35)	-	.116 (2.95)
	-02	.109 (2.77)	.062 (1.57)											
	-03	.141 (3.58)	.094 (2.39)											
	-04	.172 (4.37)	.125 (3.18)											
4	180-2228 -01	.297 (7.54)	-	.094 (2.39)	.062 (1.57)	0.62 (1.57)	.094 (2.39)	.049 (1.24)	.045 (1.14)	.062 (1.57)	-	.055 (1.40)	-	.046 (1.18)
	-02	.100 (2.54)												
5	140-1578 -02	.109 (2.77)	.062 (1.57)	.375 (9.53)	.125 (3.18)	.093 (2.36)	.188 (4.78)	.150 (3.81)	.081 (2.06)	.125 (3.18)	.093 (2.36)	.064 (1.63)	-	.154 (3.91)
	-03	.141 (3.58)	.094 (2.39)											
	-04	.172 (4.37)	.125 (3.18)											

SOLDER TERMINALS - SLOTTED



Dimensions in inches (mm)
See page 92 for recommended Anvil and Punch

How to order code

140 - 10XX - XX - 01 - 00

Basic Part No. Finish

Material Code Table		
Component	Material	RoHS
Terminal	Brass	✓

Finish Code Table		
Dash No.	Terminal Finish	RoHS
-01	Silver	✓

Fig.	Basic Part No.	L	Board Thickness	A	B	C	D	D1	D2	D3	D4	E	F	L1	Mtg. Hole Diameter
1	140-1025 -01	.078 (1.98)	.031 (0.79)	.391 (9.93)	.187 (4.75)	.125 (3.18)	.188 (4.78)	.112 (2.84)	.076 (1.93)	.145 (3.68)	.090 (2.29)	.047 (1.19)	.063 (1.60)	.068 (1.73)	.116 (2.95)
	-02	.109 (2.77)	.062 (1.57)											.098 (2.49)	
	-03	.141 (3.58)	.094 (2.39)												
	-04	.172 (4.37)	.125 (3.18)												
2	140-1027 -01	.075 (1.91)	.031 (0.79)	.328 (8.33)	-	.201 (5.11)	.188 (4.78)	.112 (2.84)	.070 (1.78)	.140 (3.56)	.109 (2.77)	.062 (1.57)	.052 (1.32)	-	.116 (2.95)
	-02	.105 (2.67)	.062 (1.57)												
	-03	.135 (3.43)	.094 (2.39)												
	-04	.165 (4.19)	.125 (3.18)												
3	140-1010 -01	.078 (1.98)	.031 (0.79)	.312 (7.92)	.144 (3.66)	.113 (2.87)	.188 (4.78)	.112 (2.84)	.078 (1.98)	.146 (3.71)	.112 (2.84)	.031 (0.79)	.040 (1.02)	-	.116 (2.95)
	-02	.109 (2.77)	.063 (1.60)												
	-03	.141 (3.58)	.094 (2.39)												
	-04	.172 (4.37)	.125 (3.18)												

