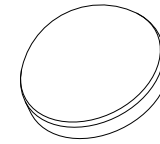


NOTES:

1. CHANGE OF MATERIAL IS NOT PERMITTED UNLESS APPROVED IN WRITING BY OTTO ENGINEERING PERSONNEL.
2. DRAWING TO BE INTERPRETED IN ACCORDANCE WITH THE CURRENT REVISION OF ASME Y14.5M.
3. TSI TO BE INTERPRETED AS THEORETICAL SHARP INTERSECTION.
4. FLASH NOT TO EXCEED .005" UNLESS OTHERWISE STATED.
5. PARTING LINE AND EJECTOR MISMATCH SHALL NOT EXCEED .005" UNLESS OTHERWISE STATED.
6. ALL DIMENSIONS ARE MINUS DRAFT UNLESS OTHERWISE STATED.
7. PARTS SHALL BE PACKAGED IN A MANNER TO PREVENT SCRATCHING, BOWING OR OTHER DAMAGE DURING SHIPMENT.

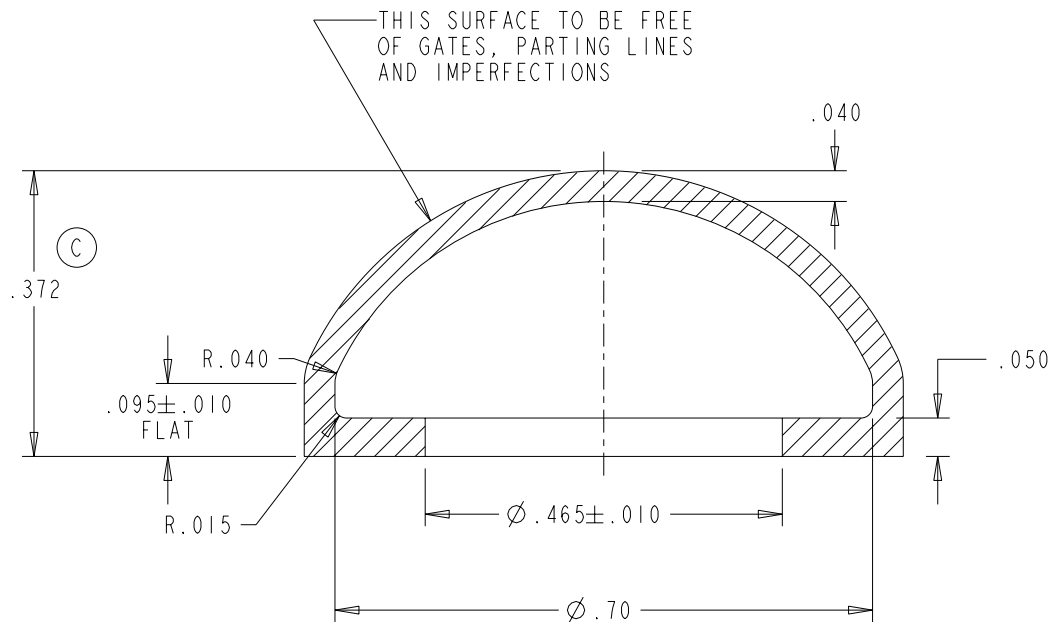


SCALE 1:1

402599

REV	OCN #	DATE	APR
A	013207	29 MAY 02	TO
B	025393	17 DEC 04	REO
C	025953	04 FEB 05	REO

PART NUMBER	COLOR
402599-1	TRANSLUCENT
402599-2	BLACK



SECTION A-A

■ MANUFACTURING ▲ SPC

PROCESS:	MATERIAL: SILICONE, 50 SHORE HARDNESS SEE TABLE FOR COLOR	OTTO CONTROLS DIVISION OF OTTO ENGINEERING INC. CARPENTERSVILLE, ILLINOIS USA	DESCRIPTION P7, SEALING BOOT FOR FLUSH DOME SWITCH				
UNLESS OTHERWISE SPECIFIED: DIMENSIONS ARE IN INCHES. TOLERANCES ARE AS LISTED. MUST BE FREE FROM BURRS AND SHARP EDGES.	TOLERANCES .XX ±.01 .XXX ±.005 ANGLES ±1° SURFACES 64 MICROINCH DO NOT SCALE DRAWING.	THIS DOCUMENT IS THE CONFIDENTIAL PROPERTY OF OTTO ENGINEERING, INC.. IT IS NOT TO BE USED IN ANY WAY DETRIMENTAL TO THE INTERESTS OF OTTO ENGINEERING, INC..	DRWN. KS	SIZE	FSCM NO	DRAWING NO.	REV.
	CHKD. KS		A	21649	402599	C	
WT.			THIRD ANGLE PROJECTION		Scale 4:1	Sheet 1 OF 1	