

ULTRA SMALL SUBMINIATURE BASICS

SINGLE BREAK, SNAP-ACTION, COMMERCIAL & MILITARY GRADES, ULTRA SMALL SUBMINIATURE

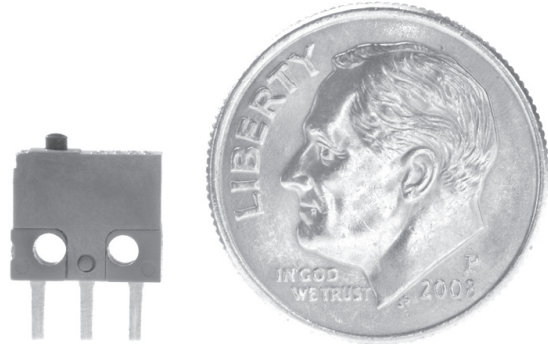
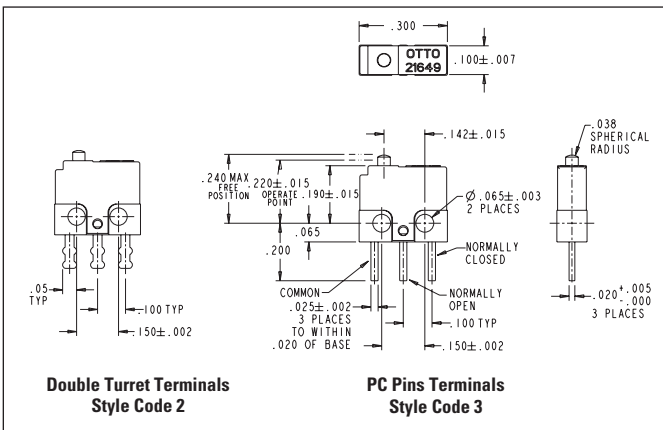
The B1 series basic switches are ultra-subminiature in size, designed to reliably switch logic level signals as well as up to 2 amps switching capacity for a minimum of 25,000 cycles. Mechanical life expectancy is in excess of one million cycles.

The molded housing is rugged and structurally stable. The terminals are molded-in and sealed against solder flux entering the switch. The terminals are available in a choice of double turret solder style and 0.020" x 0.025" PC pins.

The B1 series is also available with integral lever actuators as B1-5 series.

Features:

- **Ultra-compact: only 0.300" w x 0.255" h x 0.100" thick**
- **1 million cycle life, B1-5 Series**
- **Logic level switching capability**
- **Designed in accordance with MIL-PRF-8805/94**
- **Available in Commercial & Military grades**
- **Choice of solder or PC molded-in terminals**
- **Precision operating points**
- **Momentary action**
- **RoHS compliant**



Actual Size

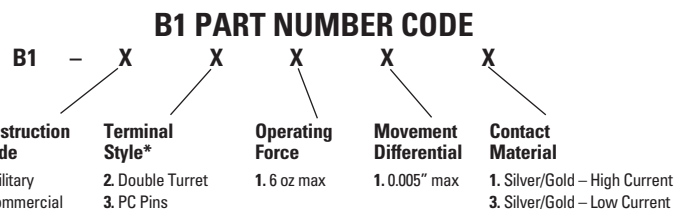
Standard Characteristics/Ratings:		
ELECTRICAL RATINGS:		
Load	Sea Level @ 28VDC or 115VAC, 60Hz	50,000 feet @ 28VDC
Resistive	2A	2A
Inductive*	0.5A	0.2A
DWV	1000Vrms	400Vrms
Logic Level	10mA @ 5VDC	10mA @ 5VDC
*L/R = 0.026		
Electrical Life:	25,000 cycles	
Mechanical Life:	B1 Series is 100,000 cycles (B1-5 Series is 1,000,000 cycles)	
Seal:	Unsealed	
Operating Temp Range:	-55°C to +125°C	
Operating Force:	6 oz max	
Release Force:	0.7 oz min	
Operate Point:	0.220 +/- 0.015 inches from mounting holes	
Overtravel:	0.003 inches min	
Movement Differential:	0.002 inches nominal, 0.005 inches max	
Pretravel:	0.015 inches max	
MATERIALS:		
Case:	Thermoset, blue	
Cover:	Thermoplastic, blue	
Button:	Thermoplastic, black	
Terminals:	Silver with gold	
Contacts:	Stationary: Silver with gold Moveable: Silver with gold	
Terminal Hardware:	None provided	
Mounting Hardware:	None provided	

ORDERING INFORMATION:

B1 Basic

Select the OTTO B1 basic switch to match your specific circuit and mechanical requirements. To order, specify your requirement using the OTTO Part Number Code shown below.

Example: B1-12111 specifies Military grade construction, double turret terminals, 6 oz max operating force and silver/gold high current contacts.



* Wire leads available, contact factory.

Votre distributeur officiel

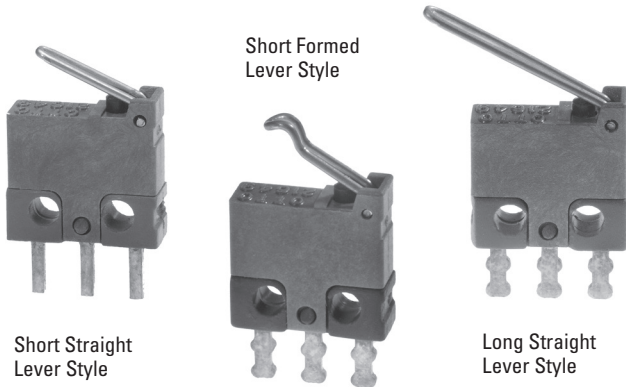


ALDERS
Indicate. Control. Connect.

ALDERS electronic GmbH
Arnoldstraße 19
47906 Kempen - Allemagne

+33 3 88064677
+33 6 33389393
catherine.sturm@alders.fr / www.alders.fr

SINGLE BREAK, SNAP-ACTION, COMMERCIAL & MILITARY GRADES, ULTRA SMALL SUBMINIATURE WITH INTEGRAL LEVERS



B1-5 Integral Lever Basic Switches

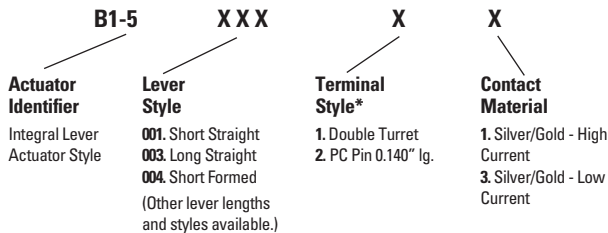
B1-5 series basic switches feature integral actuating levers. The lever is built-in so that the switch and actuator are one assembly.

Making the lever actuator an integral part of the basic switch case makes sense and saves money, too. Better precision, no parts to assemble and more variety add up to a cost saving proposition.

Lever Style	STANDARD OPERATIONAL CHARACTERISTICS						
	Catalog Number	Operating Force (max ounces)	Release Force (min ounces)	Pretravel (max inches)	Overtravel (min inches)	Movement Differential (max inches)	Operating Point (inches)
Short Straight Lever	B1-500111	1.8	0.11	0.054	0.015	0.016	0.250 +/- 0.025
Long Straight Lever	B1-500311	1.0	0.09	0.185	0.023	0.032	0.293 +/- 0.070
Short Formed Lever	B1-500411	2.0	0.15	0.030	0.015	0.020	0.293 +/- 0.025

(Other lever lengths and styles available.)

B1-5 PART NUMBER CODE



* Wire leads available, contact factory.

ORDERING INFORMATION:

B1-5 Series, Basic Switch with Integral Lever Actuator

Select the OTTO B1-5 basic switch to match your specific circuit and mechanical requirements. To order, specify your requirement using the OTTO Part Number Code shown at left.

Example: B1-500111 specifies short straight integral lever, double turret terminals and silver/gold high current contacts.

