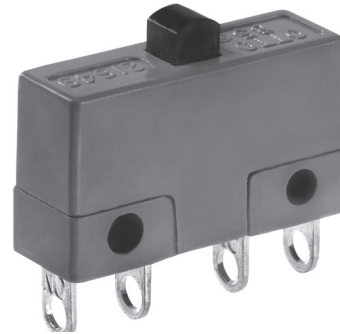


DOUBLE BREAK, SNAP-ACTION COMMERCIAL & MILITARY GRADES, MINIATURE

B5 series basic switches are miniature in size and feature up to 10 amps switching capability of 100,000 cycles. Mechanical life is one million cycles.

The molded housing is rugged and structurally stable. The terminals are sealed against solder flux entering the switch and are bright acid tin plated for excellent solderability.



Solder Terminal Style



## Features:

- Up to 10 amps switching capability
- High contact pressure
- Precision operating points
- Button accepts actuation directly from cam
- Constructed in accordance with MIL-PRF-8805/7
- Available in Commercial & Military grades
- Choice of four standard terminal styles or wire leads
- UL recognized
- B5-21141 qualified to MS27217-1
- RoHS compliant

### Standard Characteristics/Ratings:

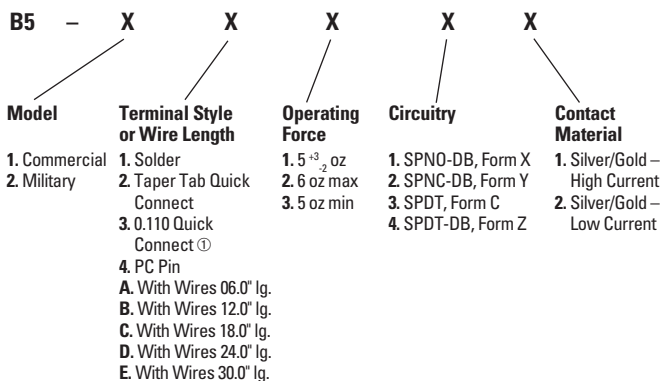
#### ELECTRICAL RATINGS:

| Circuitry         | Load       | Sea Level @ 28VDC | 70,000 feet @ 28VDC | Sea Level @ 115VAC, 60Hz |
|-------------------|------------|-------------------|---------------------|--------------------------|
| SPNO-DB & SPNC-DB | Resistive  | 10A               | 10A                 | 10.1A                    |
|                   | Inductive* | 7.5A              | 3.5A                | 5A                       |
|                   | Lamp       | 1A                | N/A                 | 3A                       |
| SPDT-DB           | Resistive  | 10A               | 10A                 | 10.1A                    |
| 2 Circuit         | Inductive* | 5A                | 2A                  | 5A                       |
|                   | Lamp       | 3A                | N/A                 | 1.5A                     |
| SPDT              | Resistive  | 10A               | 10A                 | 10.1A                    |
|                   | Inductive* | 3A                | 1.5A                | N/A                      |
|                   | Lamp       | 3A                | N/A                 | N/A                      |

\*L/R = 0.026

|                               |  |         |
|-------------------------------|--|---------|
| <b>DWV</b>                    | 1000Vrms   | 400Vrms |
| <b>Electrical Life:</b>       | 100,000 cycles   |         |
| <b>Mechanical Life:</b>       | 1,000,000 cycles   |         |
| <b>Seal:</b>                  | Unsealed   |         |
| <b>Operating Temp Range:</b>  | -65°C to +125°C  |         |
| <b>Operating Force:</b>       | 5 oz, +3/-2 oz or 6 oz max or 3 oz min                     |         |
| <b>Release Force:</b>         | 2 oz min   |         |
| <b>Operate Point:</b>         | 0.406 +/- 0.010 inches from mounting holes                 |         |
| <b>Overtravel:</b>            | 0.012 inches min   |         |
| <b>Movement Differential:</b> | 0.020 +/- 0.005 inches                                     |         |
| <b>Pretravel:</b>             | 0.050 inches max   |         |
| <b>MATERIALS:</b>             |  |         |
| <b>Case:</b>                  | Thermoset, blue  |         |
| <b>Cover:</b>                 | Thermoset, blue  |         |
| <b>Button:</b>                | Thermoplastic, black                                       |         |
| <b>Terminals:</b>             | Brass with bright acid tin plating                         |         |
| <b>Contacts:</b>              | Stationary: Silver with gold<br>Moveable: Silver with gold |         |
| <b>Terminal Hardware:</b>     | None provided, optional wires                              |         |
| <b>Mounting Hardware:</b>     | None provided  |         |

### B5 PART NUMBER CODE



① Mates with AMP Series 110 receptacles.



**Ihr offizieller Vertriebspartner**  
**ALDERS electronic GmbH**  
 Arnoldstraße 19  
 47906 Kempen · Germany

+49 2152 8955-0  
 vertrieb@alders.de

# MINIATURE BASIC SWITCHES

DOUBLE BREAK, SNAP-ACTION COMMERCIAL & MILITARY GRADES, MINIATURE

