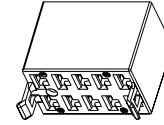


NOTES:

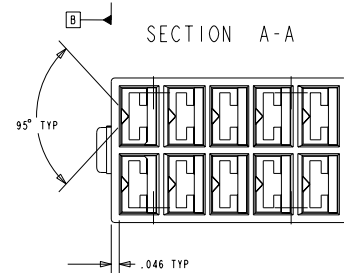
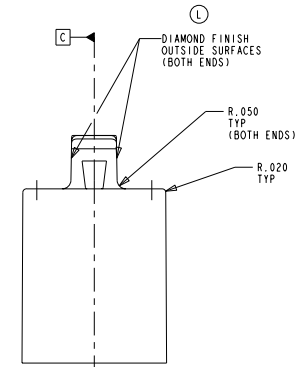
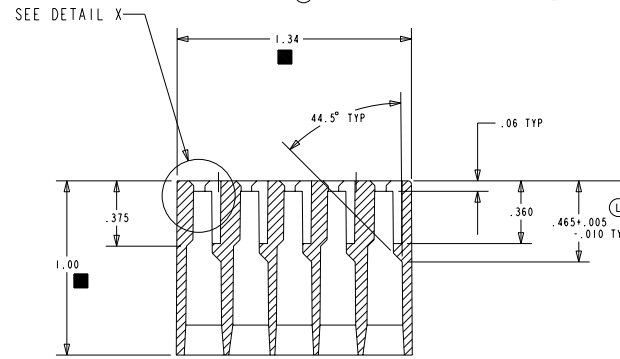
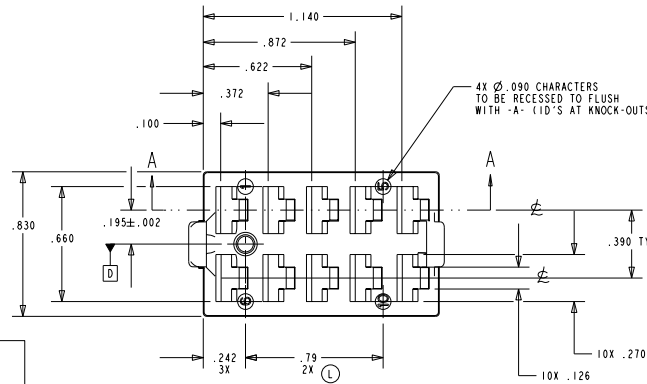
- CHANGE OF MATERIAL IS NOT PERMITTED UNLESS APPROVED IN WRITING BY OTTO ENGINEERING PERSONNEL.
- DRAWING TO BE INTERPRETED IN ACCORDANCE WITH THE CURRENT REVISION OF ASME Y14.5M.
- TSI TO BE INTERPRETED AS THEORETICAL SHARP INTERSECTION.
- THIS PRODUCT IS TO BE MANUFACTURED IN ACCORDANCE WITH EC DIRECTIVE ENV408. WASTE ELECTRICAL AND ELECTRONIC EQUIPMENT (WEEE) AND RESTRICTION OF THE USE OF HAZARDOUS SUBSTANCES IN ELECTRICAL AND ELECTRONIC EQUIPMENT (RoHS).
- 25X REGRIND PERMISSIBLE.
- FLASH NOT TO EXCEED .003 UNLESS OTHERWISE STATED.
- PARTING LINE AND EJECTOR MISMATCH SHALL NOT EXCEED .003 UNLESS OTHERWISE STATED.
- ALL DIMENSIONS ARE PLUS DRAFT UNLESS OTHERWISE STATED.
- USE OF MOLD RELEASE IS PROHIBITED UNLESS APPROVED IN WRITING BY OTTO ENGINEERING PERSONNEL.
- TOOL DESIGN, INCLUDING GATE AND EJECTOR LOCATION, SHALL BE APPROVED BY OTTO ENGINEERING PERSONNEL PRIOR TO TOOLING FABRICATION.
- CAVITY ID IS REQUIRED ON ALL MULTI-CAVITY TOOLS.
- PARTS SHALL BE PACKAGED IN A MANNER TO PREVENT SCRATCHING, BOWING OR OTHER DAMAGE DURING SHIPMENT.
- APPROVED SOURCE OF SUPPLY.
- DIMENSION BASED ON PROCESS CAPABILITY. DO NOT USE FOR NEW TOOL CREATION OR NEW DESIGN ACTIVITIES WITHOUT CHECKING THE PART DESIGN HISTORY.
- IN THE EVENT OF A CONFLICT BETWEEN THIS DRAWING AND THE ASSOCIATED CAD MODEL DATABASE, THE DATABASE SHALL TAKE PRECEDENCE. CONFIRM WITH OTTO ENGINEERING THE CORRECT DATABASE REVISION.
- CONNECTOR DESIGNED TO USE THE FOLLOWING AMP TERMINALS:
PART NUMBERS:
60253-2 (16-12 AWG)
42100-2 (18-14 AWG)
60413-1 (22-18 AWG)
OR EQUIVALENT.

PART NUMBER	DESCRIPTION
801775-2A	WITHOUT LATCHES
801775-2B	WITH LATCHES

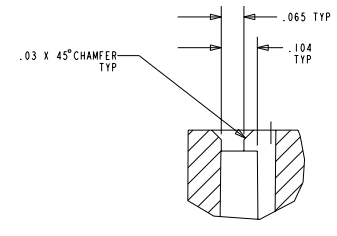


SCALE 1:1
(801775-2B)

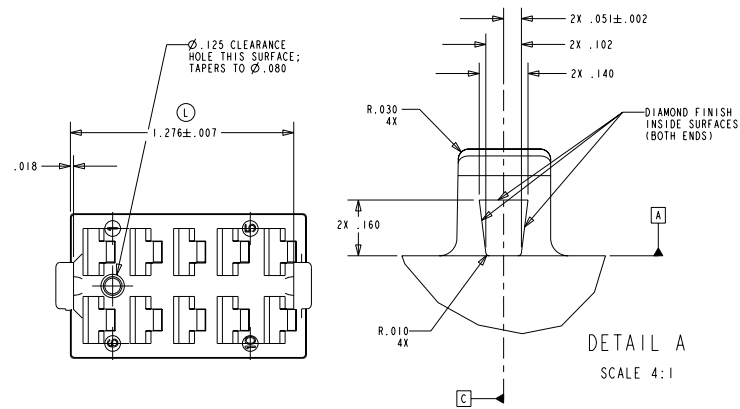
801775				
REV	OCN #	DATE	APR	
F	024620	22 OCT 04	TP	
G	026418	09 MAR 05	TP	
H	027447	25 MAY 05	TP	
J	027593	02 JUNE 05	TP	
K	028984	21 SEP 05	TP	
L	029165	05 OCT 05	TP	



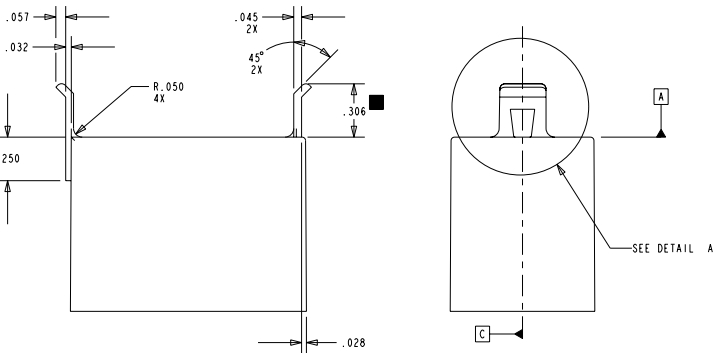
801775-2A CONFIGURATION



DETAIL X
SCALE 4:1



DETAIL A
SCALE 4:1



801775-2B CONFIGURATION

MANUFACTURING		SPC		OTTO CONTROLS		DESCRIPTION		REV.		
PROCESS:	MATERIAL:	DIVISION OF		K3/ K5/ R2, CONNECTOR BLOCK		DRWN. TP	SIZE	FSCM NO	DRAWING NO.	REV.
.	ZYTEL ISILNC-10	OTTO ENGINEERING INC.		WITHOUT LATCH FEATURE		CHKD. TP	C	21649	801775	L
.	NYLON TYPE 612	CARPENTERSVILLE, ILLINOIS USA				APPD. RTK				
.	COLOR: BLACK					WT.				
.	(MTL4151-XX)									
UNLESS OTHERWISE SPECIFIED: DIMENSIONS ARE IN INCHES. TOLERANCES ARE AS LISTED. MUST BE FREE FROM BURRS AND SHARP EDGES.		TOLERANCES .xx ±.01 .xxx ±.005 ANGLES ±.01 SURFACES 64 MICROINCH DO NOT SCALE DRAWING.		THIS DOCUMENT IS THE CONFIDENTIAL PROPERTY OF OTTO ENGINEERING, INC.. IT IS NOT TO BE USED IN ANY WAY DETRIMENTAL TO THE INTERESTS OF OTTO ENGINEERING, INC..		SCALE 2,000		Sheet 1 Of 1		