

JHT Miniature Hall Effect Joystick



WITH FULL BOOT

JHT JOYSTICK



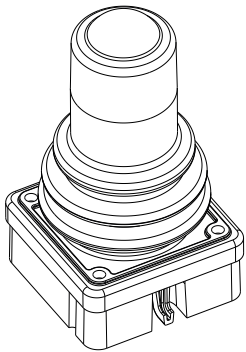
WITH HALF BOOT

The compact design and robust construction of the JHT miniature series Hall effect joystick make it ideal for applications requiring precision control in a limited space. Applications include robotics, construction equipment, hydraulic controls, medical and surgical equipment, and security cameras.

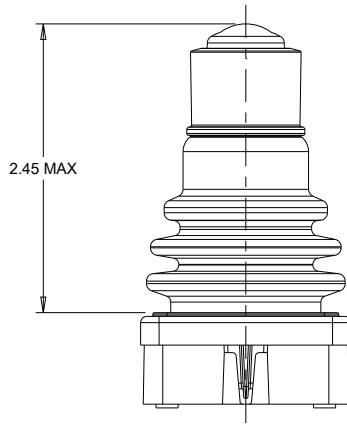
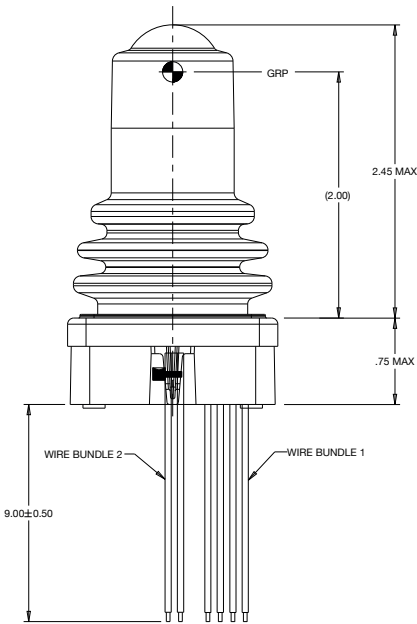
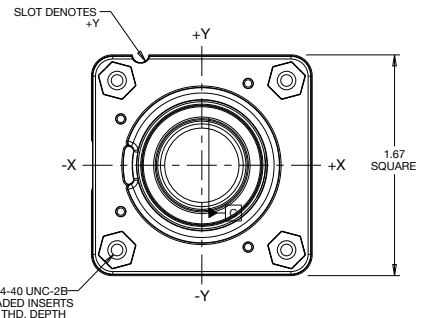
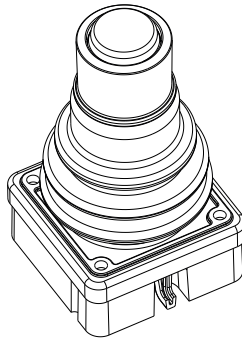
The JHT has been tested to 5 million cycles with no degradation of electrical performance or boot wear. Electronics are sealed to IP68S, and EMI/RFI immunity are per SAE J1113 specifications.

- Compact design excellent for armrest and panel mounting
- Contactless Hall effect technology
- 5 million operational cycles in all directions
- CANbus, SPI or analog output
- Single or omni-directional
- Optional pushbutton switches
- Electronics sealed per IP68S
- RoHS compliant

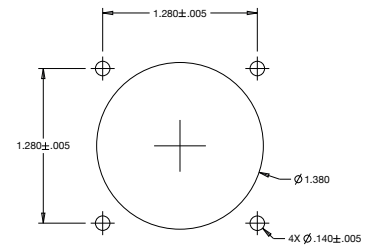
FULL BOOT



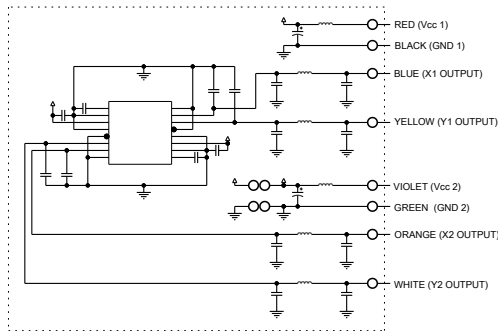
HALF BOOT



WIRES NOT SHOWN IN ALL VIEWS FOR CLARITY

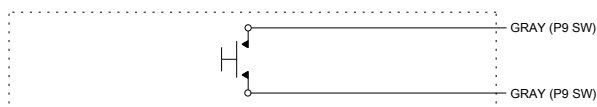


SUGGESTED PANEL OPENING
MAX. PANEL THICKNESS OF 0.140



GENERAL SCHEMATIC

(WIRE BUNDLE 1)
ALL OUTPUTS ARE NOT PRESENT IN ALL CONFIGURATIONS



PUSHBUTTON SCHEMATIC

(WIRE BUNDLE 2)
ALL WIRES ARE NOT PRESENT IN ALL CONFIGURATIONS
NOT INCLUDED IN SPI MESSAGE

ANALOG JOYSTICK				
RATED AT Vcc = 5V @ 20° C LOAD = 1ma (4.7kΩ)	UNITS	MIN	TYP	MAX
SUPPLY VOLTAGE	VDC	4.50	5.00	5.50
OUTPUT VOLTAGE TOLERANCE AT CENTER (SEE APPROPRIATE GRAPH FOR OUTPUT VOLTAGES)	VDC @5V Vcc	-25	N/A	+25
OUTPUT VOLTAGE TOLERANCE FULL TRAVEL (SEE APPROPRIATE GRAPH FOR OUTPUT VOLTAGES)	VDC @5V Vcc	-25	N/A	+25
SUPPLY CURRENT PER OUTPUT B=0, Vcc=5V, Io=0	mA	N/A	10	12
OUTPUT IMPEDANCE	kΩ	N/A	1.0	N/A
JOYSTICK				
MECHANICAL LIFE ALL DIRECTIONS	5,000,000 CYCLES			
TRAVEL ANGLE	DEGREES	18	20	22
OVER TRAVEL ANGLE	DEGREES	0.5	1.0	1.5
MAX ALLOWABLE RADIAL FORCE (STYLES 11, 12, & 21) @ GRP	LBS	N/A	N/A	50
MAX ALLOWABLE RADIAL FORCE (ALL OTHER STYLES) @ GRP	LBS	N/A	N/A	15
JOYSTICK				
ELECTRONIC ENCLOSURE DESIGN	ISO 20653, IP6K8S - DUSTTIGHT, CONTINUOUS IMMERSION, 1 METER FOR 31 MINUTES, STATIONARY DURING TEST(S)			
EMI/RFI WITHSTAND	PER SAE J1113 CONTACT FACTORY FOR DETAILS			
MATERIAL:				
HOUSING	THERMOPLASTIC, BLACK			
BELLOWS	SILICONE, BLACK			
HARDWARE	NOT PROVIDED			