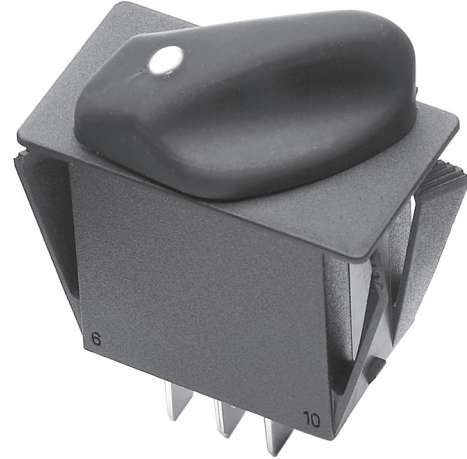


UP TO 3 POSITIONS WITH 3 OPTIONAL, INDEPENDENT LED LIGHT POSITIONS

Used in the heavy equipment, marine, process control and instrumentation markets, the R2 rotary switch is an excellent replacement for rocker switches, offering improved visual position indication, additional lighting options and different styling opportunities on front panels. The R2 is a sealed, lighted rotary switch which snaps into a 1.475" x 0.875" industry standard rocker switch panel opening. The rotary knob snaps onto a shaft and can be installed by the panel builder for those desiring that flexibility. The R2 rotary switch provides up to three positions in all combinations of momentary and maintained action. It is capable of handling loads from logic level up to 20 amps resistive. Sealing is to IP68S via a shaft O-ring seal in front and a potted base in the back. Termination options include 0.250" faston or a snap-on modular connector. The R2 offers unique lighting options including up to three independent LED light positions which illuminate a lens on the rotary knob. This design provides more lighting options than traditional rocker switches, handles the full range of electrical loads and is robust enough to survive in the most demanding applications.



Features:

- Sealed watertight per IP68S
- Snap-in panel mounting into industry standard 1.475" x 0.875" panel cutout
- Unique lighting options—up to 3 independent LED light positions
- Plastic or Soft Touch knob options available
- 2 or 3 positions in all combinations of momentary & maintained action
- Termination can be used as 0.250" faston or with snap-on modular connector

Ihr offizieller Vertriebspartner



ALDERS[®]
Indicate. Control. Connect.

ALDERS electronic GmbH
Arnoldstraße 19
47906 Kempen

+49 2152 8955-0
vertrieb@alders.de / www.alders.de

Standard Characteristics/Ratings:

ELECTRICAL RATINGS:

Load	Sea Level @ 12/28VDC	Sea Level @ 125VAC
Resistive	20A	16A
Inductive	15A	15A
Lamp	4A	4A
Motor	0.5HP @ 110VAC	
DWV	1000Vrms except across light terminals	
Logic Level	10mA @ 5VDC, max D.C. logic level ratings (void if logic level load(s) exceeded at any time)	

Electrical Life: 25,000 cycles at full load

Lighting: LED 2V, 6V, 12V, 24V (VDC)

Mechanical Life: 100,000 cycles

Seal: IP68S

Operating Temp Range: -40°C to +85°C

MATERIALS:

Case: Thermoplastic

Knob: Thermoplastic

Lens: Thermoplastic, clear

Terminals: Copper, silver plate, gold plate for logic level

Contacts: Silver alloy, gold plate for logic level

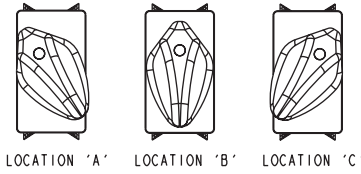
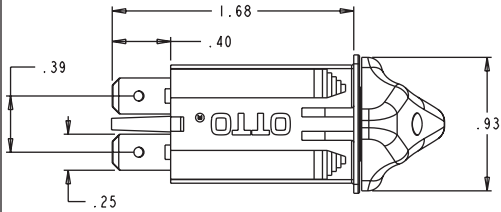
Terminal Hardware: R2 recommended Quick Connect terminals:
AMP 60253-2 for 12-16 AWG
AMP 42100-2 for 14-18 AWG

Mounting Hardware: None provided

ROTARY SWITCH

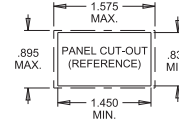
R2
LIGHTED
ROTARY

UP TO 3 POSITIONS WITH 3 OPTIONAL, INDEPENDENT LED LIGHT POSITIONS

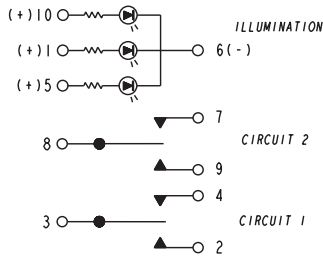


KNOB LOCATION DETAILS

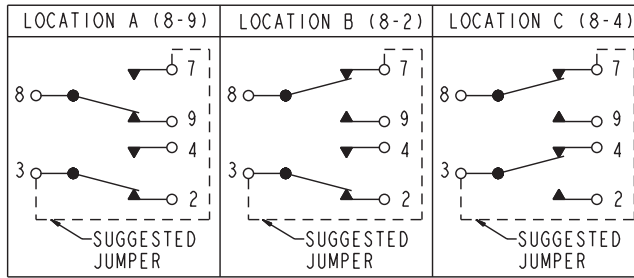
PANEL THICKNESS RANGE OF .025 - .105 A GASKET IS RECOMMENDED
 PANEL THICKNESS RANGE OF .105 - .187 W/O GASKET
 PANEL OPENING: MIN. TYP. MAX.
 WIDTH .830 .863 .895
 LENGTH 1.450 1.513 1.575



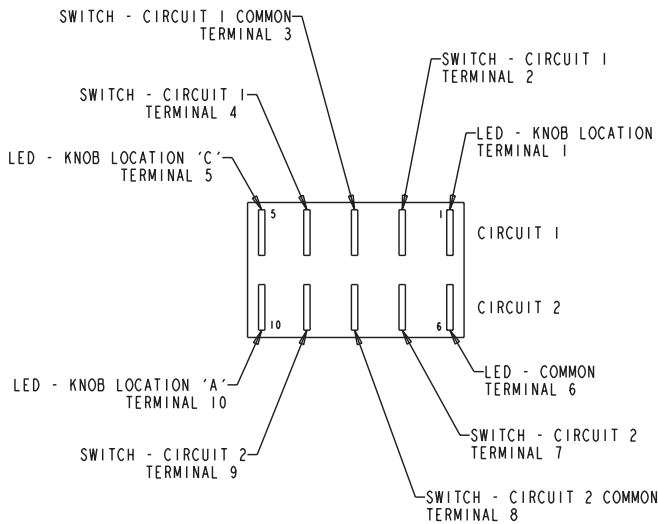
ELECTRICAL SCHEMATICS



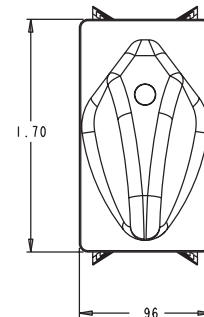
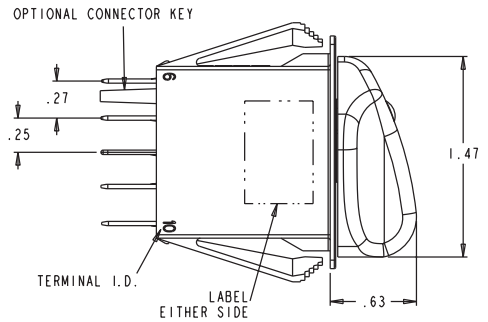
GENERIC SWITCH SCHEMATIC
 USE TERMINALS AS APPLICABLE
 TO PART NUMBER



SPTT SCHEMATIC
 USE R2XXXX77XXXX FOR (8-9),(8-2),(8-4)
 USE R2XXXX74XXXX FOR (OFF),(8-2),(8-4)
 USE R2XXXX67XXXX FOR (8-9),(8-2),(OFF)



TERMINAL LOCATION AS VIEWED
 FROM THE BOTTOM OF THE SWITCH



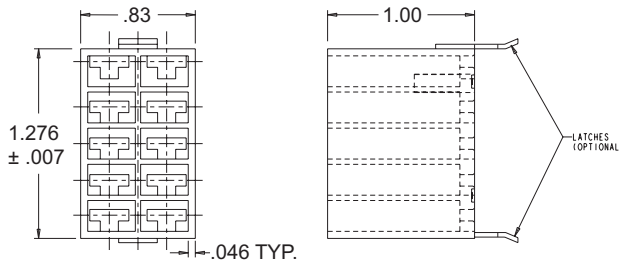
• R2 panel plugs available as shown in Panel Plugs (PP) section.

UP TO 3 POSITIONS WITH 3 OPTIONAL, INDEPENDENT LED LIGHT POSITIONS

R2 SERIES PART NUMBER CODE

R2	X	X	XX	X	X	X	X	X	X	X				
Terminal Style/ Switch Rating	Knob Color & Texture	Switch Action			Switch Circuit 1 Terminals 2, 3, 4			Switch Circuit 2 Terminals 7, 8, 9			LED Light Source Voltage*	Light Source Color		
		Knob Location "A"	Knob Location "B"	Knob Location "C"	Knob Location "A"	Knob Location "B"	Knob Location "C"	Knob Location "A"	Knob Location "B"	Knob Location "C"	N. NONE A. 2V B. 6V C. 12V D. 24V	Location "A"	Location "B"	Location "C"
A. Without Terminal Barriers, With Connector Keying Pin, Standard Rating	A. Black Plastic	2-Position Switch, Knob Locations A/B			2-Position Switch, Knob Locations A/B			N. NONE (Single Pole)				1. NONE	1. NONE	1. NONE
B. Without Terminal Barriers, Without Connector Keying Pin, Standard Rating	B. Black Soft Touch	11. Maintain	Maintain	N/A	1. 3-2	OFF	N/A	1. 8-9	OFF	N/A		1. Red	1. Red	1. Red
C. Without Terminal Barriers, With Connector Keying Pin, Logic Level Rating	C. White Plastic	12. Maintain	Momentary	N/A	2. OFF	3-4	N/A	2. OFF	8-7	N/A		2. Green	2. Green	2. Green
D. Without Terminal Barriers, Without Connector Keying Pin, Logic Level Rating	D. White Soft Touch	13. Momentary	Maintain	N/A	3. 3-2	3-4	N/A	3. 8-9	8-7	N/A		3. Amber	3. Amber	3. Amber
	E. Red Plastic	2-Position Switch, Knob Locations A/C			2-Position Switch, Knob Locations A/C			2-Position Switch, Knob Locations A/C						
	F. Red Soft Touch	21. Maintain	N/A	Maintain	1. 3-2	N/A	OFF	1. 8-9	N/A	OFF				
		22. Maintain	N/A	Momentary	2. OFF	N/A	3-4	2. OFF	N/A	8-7				
		23. Momentary	N/A	Maintain	3. 3-2	N/A	3-4	3. 8-9	N/A	8-7				
		2-Position Switch, Knob Locations B/C			2-Position Switch, Knob Locations B/C			2-Position Switch, Knob Locations B/C						
		31. N/A	Maintain	Maintain	1. N/A	3-2	OFF	1. N/A	8-9	OFF				
		32. N/A	Maintain	Momentary	2. N/A	OFF	3-4	2. N/A	OFF	8-7				
		33. N/A	Momentary	Maintain	3. N/A	3-2	3-4	3. N/A	8-9	8-7				
		3-Position Switch, Knob Locations A/B/C			3-Position Switch			3-Position Switch						
		44. Maintain	Maintain	Maintain	4. OFF	3-4	3-4	4. OFF	8-7	8-7				
		45. Momentary	Maintain	Momentary	5. 3-2	OFF	3-4	5. 8-9	OFF	8-7				
		46. Maintain	Maintain	Momentary	6. 3-2	3-2	OFF	6. 8-9	8-9	OFF				
		47. Momentary	Maintain	Maintain	7. 3-2	3-2	3-4	7. 8-9	8-7	8-7				
					8. 3-2	OFF	OFF	8. 8-9	OFF	OFF				
					9. OFF	OFF	3-4	9. OFF	OFF	8-7				

*See appendix for complete voltage/ratings table



R2 Connector

P/N C801775-2A Without Latches
P/N C801775-2B With Latches

Recommended Quick Connect Terminals

AMP C60253-2 for 12-16 AWG
AMP C42100-2 for 14-18 AWG

Panel Seal Gasket

P/N C807109-25-1