

FEATURING B2 & B3 BASIC SWITCHES

3-Position, 6 Pole, Lever Lock

SPECIFICATIONS:

Position	Circuit	Action
1	3PNO, 3PNC	Maintained
2	6PNO	Momentary
3	6PNC	Locked

Basic Switches: Per MIL-PRF-8805/4 (except with integral lever)

Operating Force: 1.5 lbs. to 2.5 lbs.

Rating: 0.1mA to 1 amp Resistive @ 28VDC
0.5 amp Inductive @ 28VDC

Handle: Stainless steel, dull nickel plate

Cap, Handle: Brass, dull nickel plate

Bushing: Stainless steel with black oxide finish

Bracket: Stainless steel



T1-0125

3-Position, 3 Pole

SPECIFICATIONS:

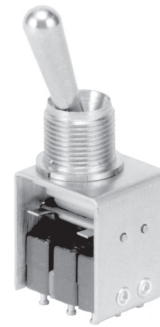
Position	Actuation
Up	N.C., N.C., N.C.
Center	N.C., N.O., N.C.
Down	N.O., N.C., N.O.

Basic Switches: Per MIL-PRF-8805/4

Operating Force: 1.0 lb. to 6.0 lbs.

Rating: 300mA @ 5VDC Resistive
Higher ratings available

Mechanical Life: 25,000 cycles



T1-0041

3-Position, 6 Pole

SPECIFICATIONS:

Position	Circuit	Force	Action
1	3PNC, 3PNO	2.0 lbs. to 6.0 lbs.	Maintained
2	6PNC	N/A	N/A
3	3PNO, 3PNC	2.0 lbs. to 6.0 lbs.	Maintained

Rating: 1 amp Resistive @ 28VDC
0.5 amp Inductive @ 28VDC

Mechanical Life: 25,000 cycles

Bushing, Bracket & Lever: Stainless steel



T1-0050-1

Ihr offizieller Vertriebspartner



ALDERS
Indicate. Control. Connect.

ALDERS electronic GmbH
Arnoldstraße 19
47906 Kempen

+49 2152 8955-0
vertrieb@alders.de / www.alders.de

Mounting Hardware

MILITARY P/N	OTTO P/N	BUSHING SIZE (inches)
KEYWAY WASHERS		
MS25081-C0	C710081-C0	0.250"
MS25081-C4	C710081-C4	0.469"
MS25081-C6	C710081-C6	0.625"
INTERNAL TOOTH LOCKWASHERS		
MS35333-135	C710333-135	0.250"
MS35333-136	C710333-136	0.469"
MS35333-138	C710333-138	0.625"
HEX NUTS—STANDARD		
MS25082-C14	C710082-C14	0.250-40
MS25082-C21	C710082-C21	0.469-32
MS25082-B11	C710082-B11	0.625-24
HEX NUTS—WIRE LOCKING		
MS21340-04	C710340-04	0.469-32
MS21340-05	C710340-05	0.625-24

All hardware is stainless steel except MS25082-B11 which is brass, black oxide coated.