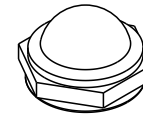


NOTES:

1. CHANGE OF MATERIAL IS NOT PERMITTED UNLESS APPROVED IN WRITING BY OTTO ENGINEERING PERSONNEL.
2. DRAWING TO BE INTERPRETED IN ACCORDANCE WITH THE CURRENT REVISION OF ASME Y14.5.
3. TSI TO BE INTERPRETED AS THEORETICAL SHARP INTERSECTION.
4. THIS PART IS TO BE MANUFACTURED IN ACCORDANCE WITH THE LATEST APPLICABLE REGULATIONS OF EC DIRECTIVES FOR THE RESTRICTION OF THE USE OF HAZARDOUS SUBSTANCES IN ELECTRICAL AND ELECTRONIC EQUIPMENT (ROHS), WASTE ELECTRICAL AND ELECTRONIC EQUIPMENT (WEEE) AND REGISTRATION, EVALUATION, AUTHORIZATION AND RESTRICTION OF CHEMICALS (REACH).
5. MATERIAL: SILICONE
COLOR: BLACK.

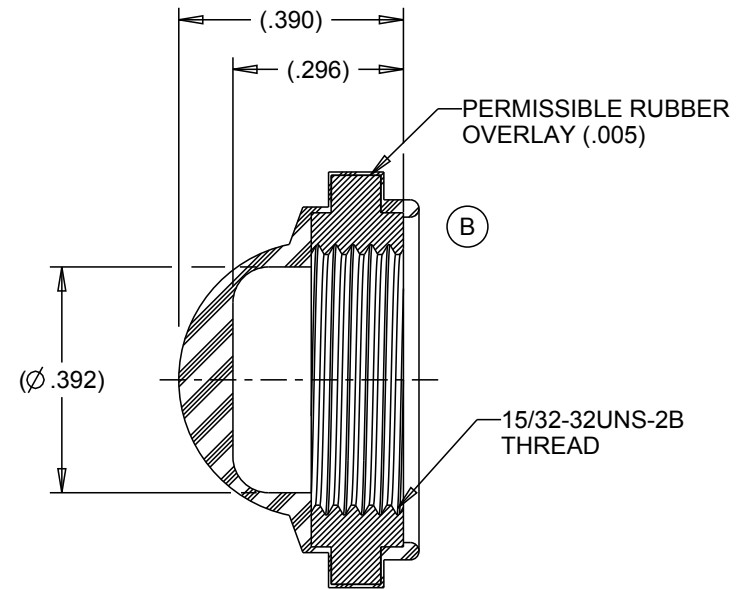
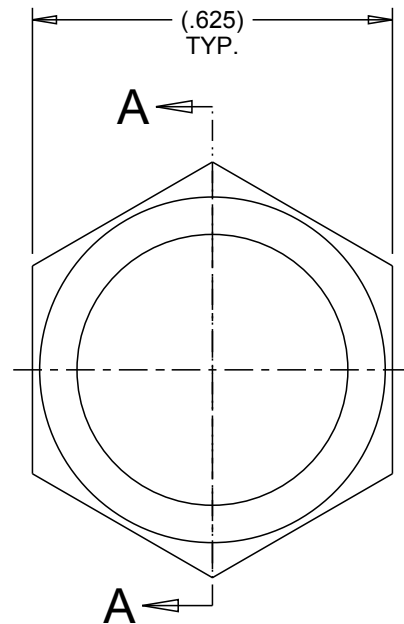


SCALE 1:1

C701211

REV	OCN #	DATE	APR
A	082725	24 MAY 16	TAO
B	085404	03 MAR 17	TAO

(B)



SECTION A-A

<p>KEY CHARACTERISTICS</p> <p>SPECIAL REQUIREMENT</p>		<p>OTTO[®]</p> <p>CARPENTERSVILLE, ILLINOIS USA</p>	<p>DESCRIPTION</p> <p>P7, HEXNUT BOOT</p> <p>FOR PUSHBUTTON SWITCHES</p>				<p>(B)</p>								
			<p>UNLESS OTHERWISE SPECIFIED: DIMENSIONS ARE IN INCHES. TOLERANCES ARE AS LISTED. MUST BE FREE FROM BURRS AND SHARP EDGES.</p>	<p>TOLERANCES</p> <p>.XX ±.03</p> <p>.XXX ±.010</p> <p>ANGLES ±2°</p> <p>DO NOT SCALE DRAWING</p>	<p>THIS DOCUMENT IS THE CONFIDENTIAL PROPERTY OF OTTO ENGINEERING, INC.. IT IS NOT TO BE USED IN ANY WAY DETRIMENTAL TO THE INTERESTS OF OTTO ENGINEERING, INC..</p>	<table border="1"> <tr> <td>DRWN. ORG</td> <td>SIZE</td> <td>FSCM NO</td> <td>DRAWING NO.</td> <td>REV.</td> </tr> <tr> <td>CHKD. ORG</td> <td rowspan="2">A</td> <td rowspan="2">21649</td> <td rowspan="2">C701211</td> <td rowspan="2">B</td> </tr> <tr> <td>APPD. SPM</td> </tr> </table>		DRWN. ORG	SIZE	FSCM NO	DRAWING NO.	REV.	CHKD. ORG	A	21649
DRWN. ORG	SIZE	FSCM NO	DRAWING NO.	REV.											
CHKD. ORG	A	21649	C701211	B											
APPD. SPM															