

TC SERIES SEALED SWITCH MODULE

The TC is a self-contained, sealed switch module with up to 5 positions. It can be used in a myriad of applications that require a compact switch module and long life. At slightly over an inch in diameter, it can be used in a grip, front panel, or hand held device, just to name a few applications. It is available in either a top mount or rear mount.

The advantage of the TC module is that it incorporates keypad functionality within a very small footprint. Standard or custom legends are available and can be LED backlit.

Standard termination options include flying leads, ribbon cable (with or without AMP connector) and FFC (flexible flat cable).

Tested to three million cycles, the TC has an operating temperature range of -40°C to 85°C and it is sealed to IP68S.

The TC switch module can be used in panel or grip applications and is especially useful in cursor control or data entry applications.

Applications include:

- construction
- agriculture
- industrial
- material handling
- medical

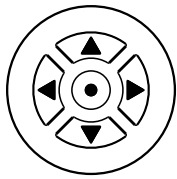
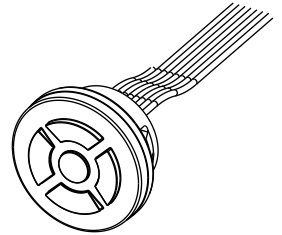
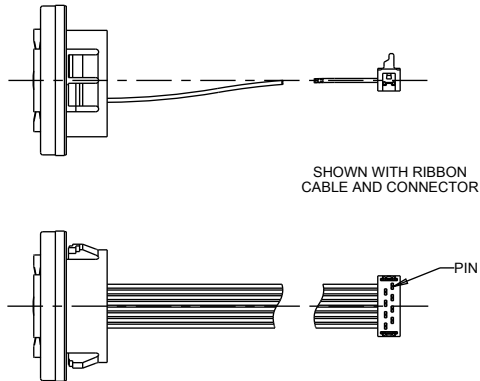
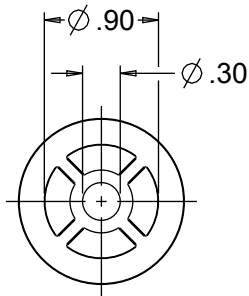
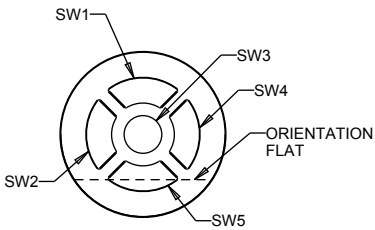
Like all OTTO products, it is built to withstand the rigors of the most demanding applications.



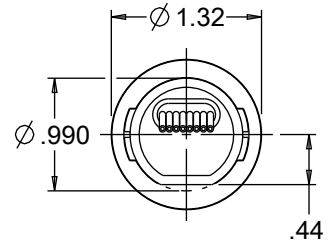
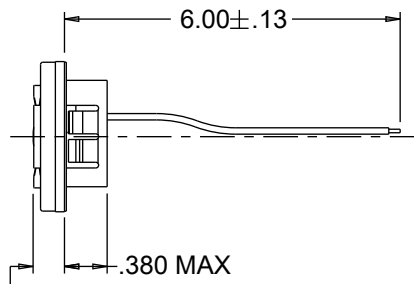
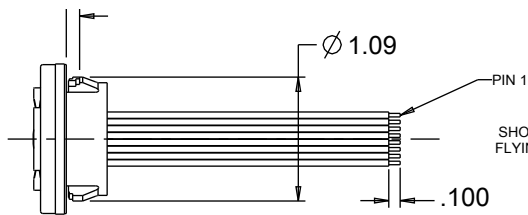
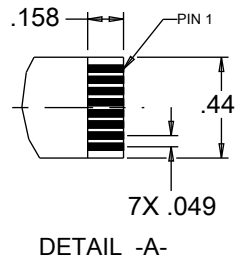
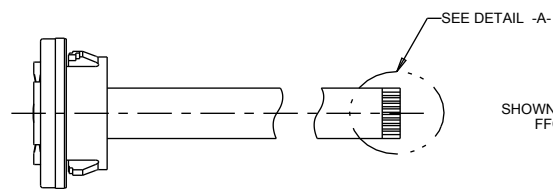
Standard Characteristics/Ratings:	
ELECTRICAL RATINGS:	1-28VDC @ Sea Level
Load	10-100mA Resistive
Electrical Life:	3,000,000 Cycles
Mechanical Life:	3,000,000 Cycles
Seal:	IP68S
Operating Temp Range:	-40°C to +85°C
Operating Force:	1.0 +/- 0.5 lb.
MATERIALS:	
Housing:	PBT
Keypad:	Silicone Rubber
Terminal Hardware:	None provided
Mounting Hardware:	VHB tape

TC-	Position X	Mounting X	Termination X	Backlight X	Color X	Legend X	Not Used X
	1 = 1 position 2 = 2 position 3 = 3 position 4 = 4 position 5 = 5 position	1 = Top Mount 2 = Rear Mount	2 = Flying Leads, UL 1569, 24 AWG 3 = FFC, UL 20624 4 = Ribbon Cable, UL 2651, & AMP Connector 5 = Ribbon Cable, UL 2651, Blunt Cut	N = None 9 = White	2 = Black	None A = Arrows* *For 5-position switch Color = White	

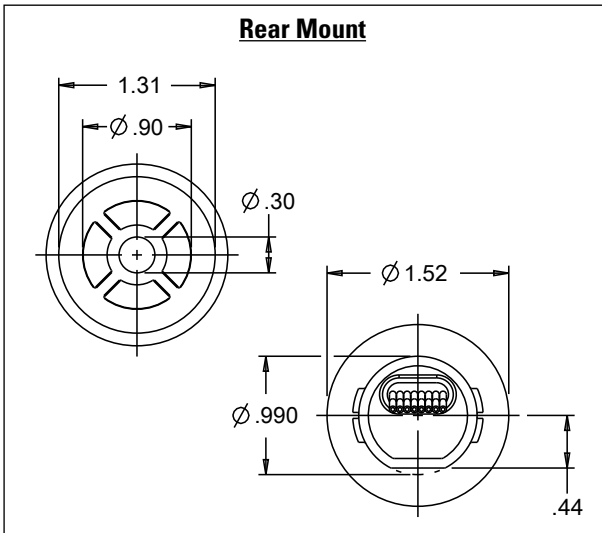
TC-51xxxxx Top Mount, 5 Position Module



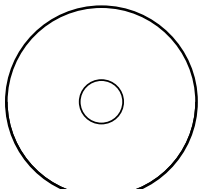
Standard legend configuration



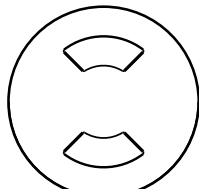
.300 MAX



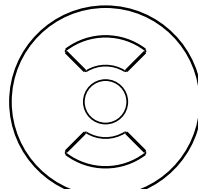
TC Switch Module Keypad Configurations



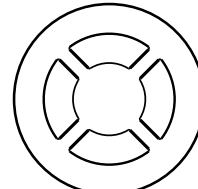
TC-11xxxxx



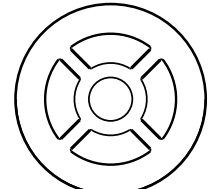
TC-21xxxxx



TC-31xxxxx



TC-41xxxxx



TC-51xxxxx