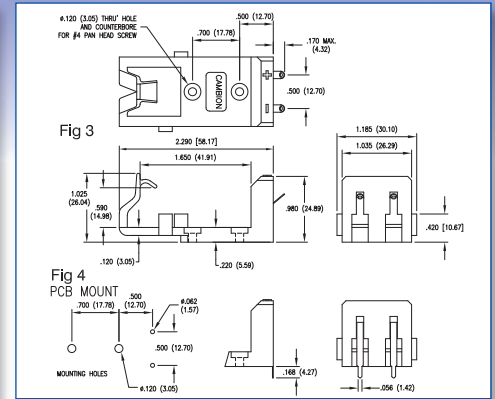
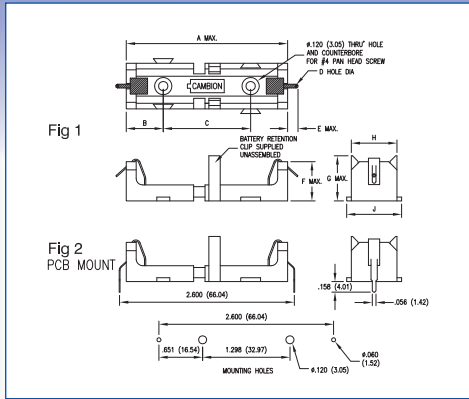
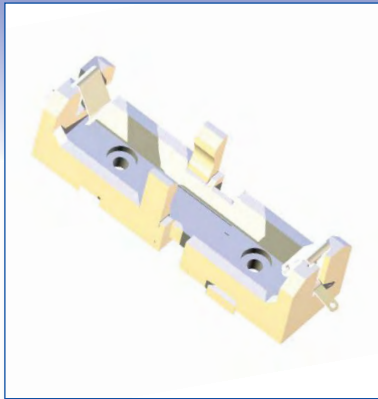


BATTERY HOLDERS



Dimensions in inches (mm)

How to order code
400 - XXXX - 01 - 00 - 20
 Basic Part No. | Colour

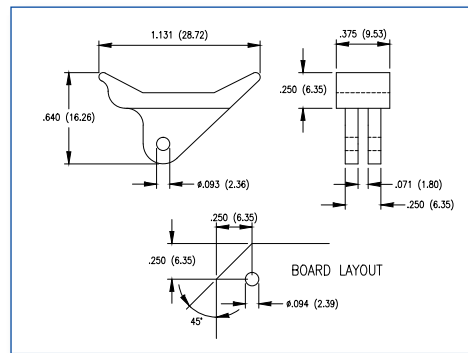
Material Code Table		
Component	Material	RoHS
Body	Polyester	✓
Clip	Polyester	✓
Spring & Solder Lug	Phosphor Bronze	✓

Finish Code Table		
Dash No.	Spring & Solder Lug Finish	RoHS
-04	Electro-Tin	✓

Colour Code Table	
Dash No.	Colour
-20	Natural

Fig.	Basic Part No.	Battery Size	A	B	C	D	E	F	G	H	J
1	400-2800 -01	C	2.400 (60.96)	.590 (14.99)	1.200 (30.48)	.065 (1.65)	.280 (7.11)	1.080 (27.43)	1.193 (30.30)	1.090 (27.69)	1.200 (30.48)
	400-2801 -01	D	2.930 (74.42)	.650 (16.51)	1.592 (40.44)	.065 (1.65)	.280 (7.11)	1.335 (33.91)	1.400 (35.36)	1.500 (38.10)	1.600 (40.64)
	400-2802 -01	AA	2.430 (61.72)	.550 (13.97)	1.298 (32.97)	.046 (1.17)	.220 (5.59)	.780 (19.81)	.747 (18.97)	.680 (17.27)	.773 (19.63)
2	400-2803 -01	AA	2.430 (61.72)	.550 (13.97)	1.298 (32.97)	-	-	.775 (19.68)	.747 (18.97)	.680 (17.27)	.773 (19.63)
3	400-1800 -01	PP3	-	-	-	.046 (1.17)	-	-	-	-	-
4	400-1803 -01	PP3	-	-	-	-	-	-	-	-	-

CARD EJECTORS



Dimensions in inches (mm)

How to order code
415 - 7036 - 01 - 00 - XX
 Basic Part No. | Colour

Material Code Table		
Component	Material	RoHS
Ejector	Nylon 6/6	✓

Steel spring pins supplied un-assembled

Colour Code Table	
Dash No.	Colour
-10	Black
-12	Red
-13	Orange
-16	Blue
-20	Natural (White)