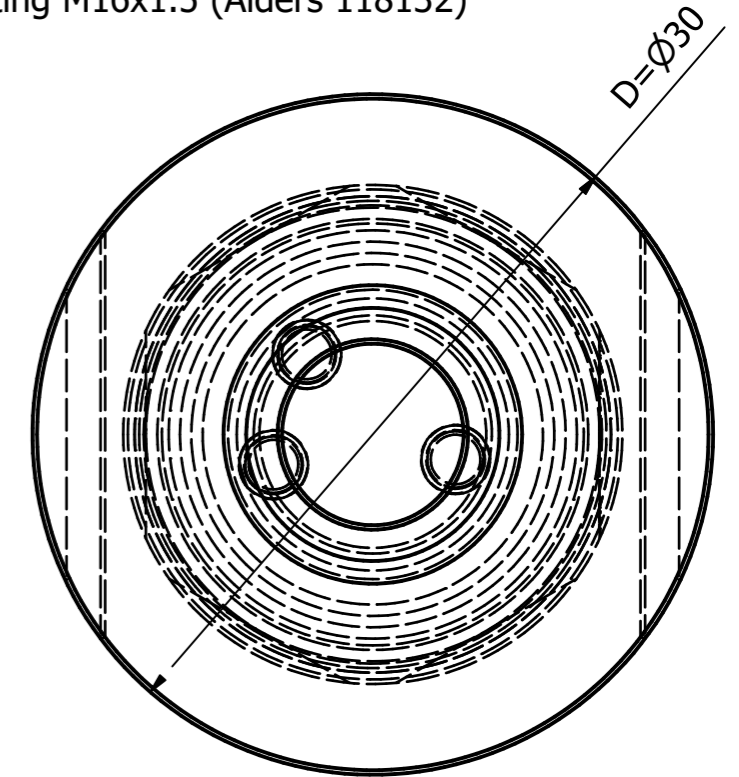
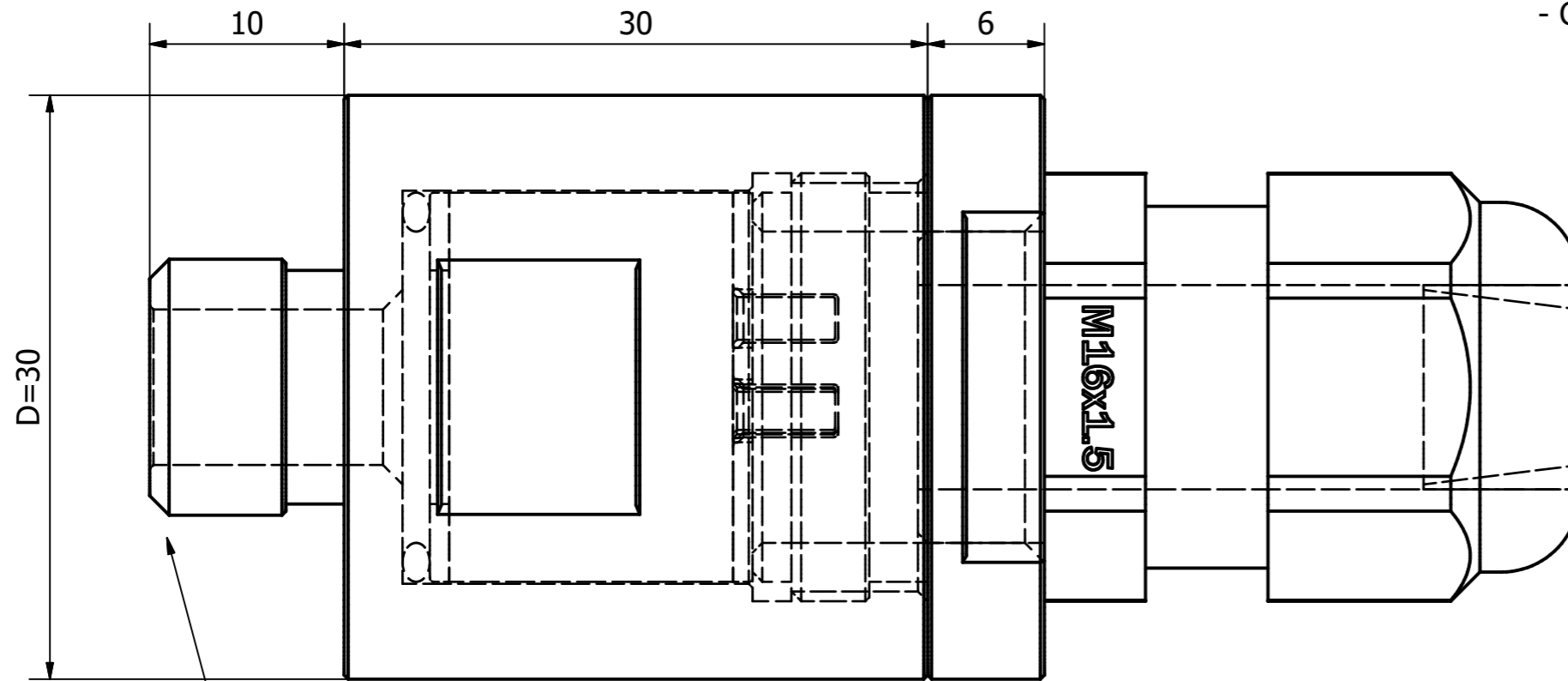


Options for the H2 Sensor Housing

Type ASH-202101-XXX

Part List

- H2 Sensor Housing Part 1
- H2 Sensor Housing Part 2
- O-Ring 16x2 NBR-BUNA 70 Shore A (Alders 118133)
- Cable Fitting M16x1.5 (Alders 118132)



Standard male pipe threads:

- ASH-202101-101 G1/8" (OD~9.7mm)
- ASH-202101-102 G1/4" (OD~13.2mm)
- ASH-202101-103 G3/8" (OD~16.7mm)
- ASH-202101-104 G1/2" (OD~21.0mm)

Standard female pipe threads:

- ASH-202101-201 G1/8"
- ASH-202101-202 G1/4"
- ASH-202101-203 G3/8"
- ASH-202101-204 G1/2"

Standard male metric threads:

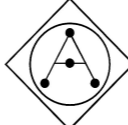
- ASH-202101-301: M12x1.5
- ASH-202101-302: M14x1.5
- ASH-202101-303: M16x1.5
- ASH-202101-304: M18x1.5
- ASH-202101-305: M20x1.5

Standard female metric threads:

- ASH-202101-401: M12x1.5
- ASH-202101-402: M14x1.5
- ASH-202101-403: M16x1.5
- ASH-202101-404: M18x1.5
- ASH-202101-405: M20x1.5

Standard male metric ISO threads (DIN 13-1):

- ASH-202101-501: M10 (x1.50)
- ASH-202101-502: M12 (x1.75)
- ASH-202101-503: M14 (x2.00)
- ASH-202101-504: M16 (x2.00)
- ASH-202101-505: M20 (x2.50)

Designed by Heiko Lange	Checked by Daniel Jennen	Approved by Martin Alders	Date 13.09.2021	Date 13.09.2021	
 ALDERS Indicate. Control. Connect.		Full assembly shown			
		H2 Sensor Housing Options	Edition	Sheet 1 / 1	